



THE HAMLET
CHILMINGTON GREEN · ASHFORD · KENT

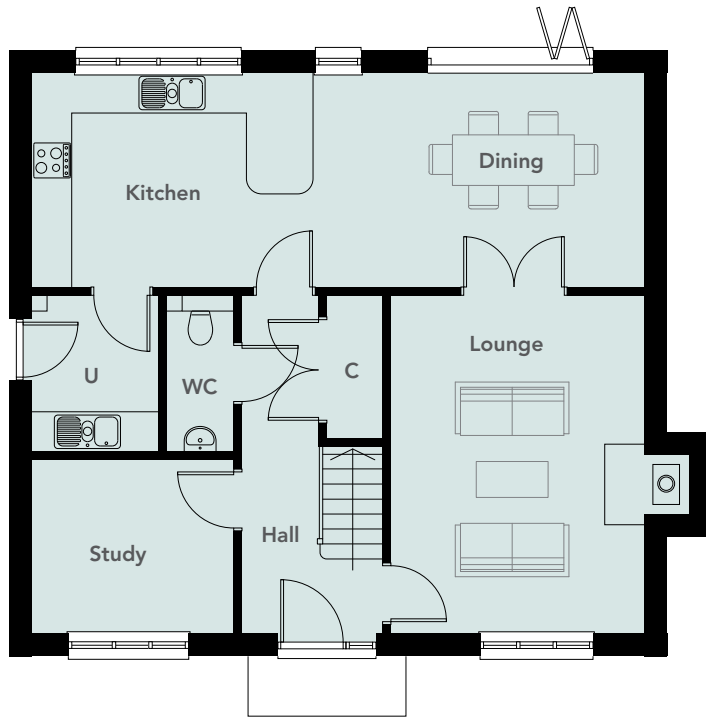
THE OSPREY

4 BEDROOM DETACHED FAMILY HOME PLOTS 55 & 76 1643 SQ.FT

jarvis
HOMES
SINCE 1649

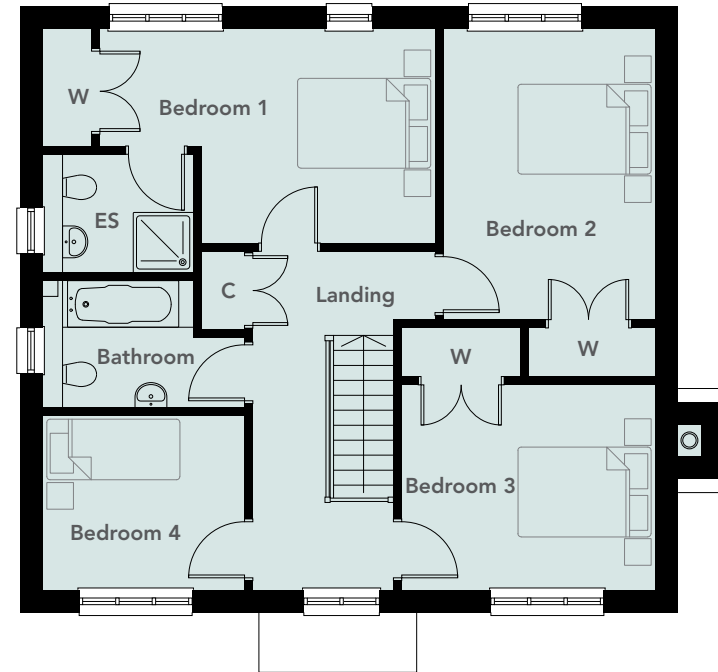
THE OSPREY

4 BEDROOM DETACHED FAMILY HOME PLOTS 55 & 76 1643 SQ.FT



GROUND FLOOR

Kitchen / Dining	9.2m x 3.2m	30' 2" x 10' 5"
Utility / WC	2.4m x 3.2m	7' 9" x 10' 5"
Study	3.2m x 2.6m	10' 5" x 8' 5"
Lounge	3.8m x 5.1m	12' 5" x 16' 7"



FIRST FLOOR

Bedroom 1	6.0m x 3.2m	19' 7" x 10' 5"
Bedroom 1 En-Suite	1.8m x 2.3m	5' 9" x 7' 5"
Bedroom 2	3.9m x 3.7m	12' 8" x 12' 1"
Bedroom 3	4m x 3.8m	13' 1" x 12' 0"
Bedroom 4	2.6m x 3.1m	8' 5" x 10' 2"
Main Bathroom	3.2m x 1.9m	10' 5" x 6' 2"

ES: En-Suite **W:** Wardrobe **C:** Cupboard **U:** Utility **WC:** Toilet

Please note: floor plans are not to scale. Dimensions given are +/- 50mm. Please read in conjunction with site plan.

*Floorplans are indicative only. Jarvis Homes reserves the right to change the specification. Please discuss the individual plot with the sales advisor for more information.